

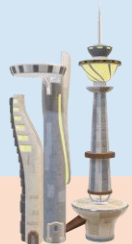
# Phases of Operation/Events

Timeline

Communications/Logistical Support

## OPERATIONAL INTERFACES

ATC, Airline OCC and MCC



**AIRPORT  
RUNWAYS/TAXIWAYS**



**Taxi**

10 min

**GATE SERVICES,  
PASSENGER LOADING,  
FUELING, CHARGING**

**Climb**

30 min

**Cruise**

1-2.5 hrs

Navigational Waypoints

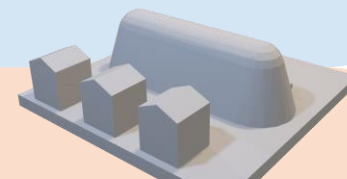


Airport Glideslope

**Loiter**

45 min

**FAA-MANDATED  
MAINTENANCE HEALTH  
CHECKS**



**Descent**

20 min

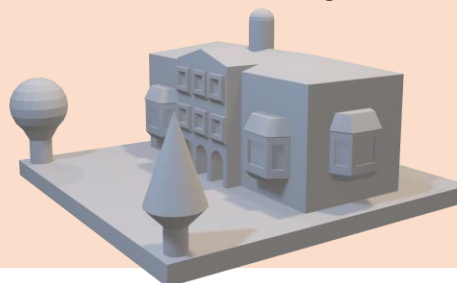
**Taxi out**

10 min

**Reserve Mission**

1 hr

**TYPE CERTIFICATE HOLDER  
OPERATIONS  
ENGINEERING  
MAINTENANCE**



SATCOM

